

Women's Health VICTORIA

Victorian Women's Health Atlas

<http://victorianwomenshealthatlas.net.au>

Welcome to the Victorian Women's Health Atlas

The Victorian Women's Health Atlas has been developed by Women's Health Victoria, in collaboration with other state-wide and regional women's health services and Family Planning Victoria, as a tool to assist in the identification of gender impacts on key health areas. The Atlas provides a coordinated State approach to support Women's Health Services and other health planners, to enable comparison between LGAs, Regions and the State. The purpose of the Atlas is to increase the availability of reliable data for evidence based decisions about service design, emerging priorities and program planning.

August 2018 Data Updates

- Sexual and Reproductive Health:** Chlamydia / Gonorrhoea / Hepatitis B
- Violence Against Women:** Perceptions Of Safety
- Mental Health:** Personal Wellbeing
- Cancer:** Breast Cancer / Gynaecological Cancer / Bowel Cancer *(NEW)*
- Gender Equality:** Low Gender Equality In Relationships *(NEW)*

Under review: IUD Insertion / Implanon Insertion

Priority Health Areas

- Sexual and Reproductive Health
- Mental Health
- Avoidable Mortality
- Violence Against Women
- Cancer
- Gender Equality

healthy • empowered • equal

© Women's Health Victoria 2015. All rights reserved.

Women's Health VICTORIA

Choose priority area Step 1

Priority Health Areas

- Sexual and Reproductive Health
- Mental Health
- Avoidable Mortality
- Violence against Women**
- Cancer
- Gender Equality

healthy • empowered • equal

© Women's Health Victoria 2015. All rights reserved.



Choose indicator
Step 2

Violence Against Women

Violence against women is experienced by a significant number of women in Australia despite it being preventable. For Victorian women aged between 15 and 44 years, intimate partner violence is the leading cause of preventable death, disability and illness. The impact of violence against women is widespread and long-standing, generating profound personal, social and economic costs to individuals, the community and our nation. Specific groups of women are particularly at risk of violence due to the interplay of a number of complex factors, including Aboriginal and Torres Strait Islander women, women with a disability and culturally and linguistically diverse women. Having the confidence, knowledge and ability to seek support and access appropriate services is also difficult for many women.

Select an Indicator to view the Atlas

- Perceptions Of Safety
- Sexual Offences
- Stalking, Harassment And Threatening Behaviours
- Family Violence

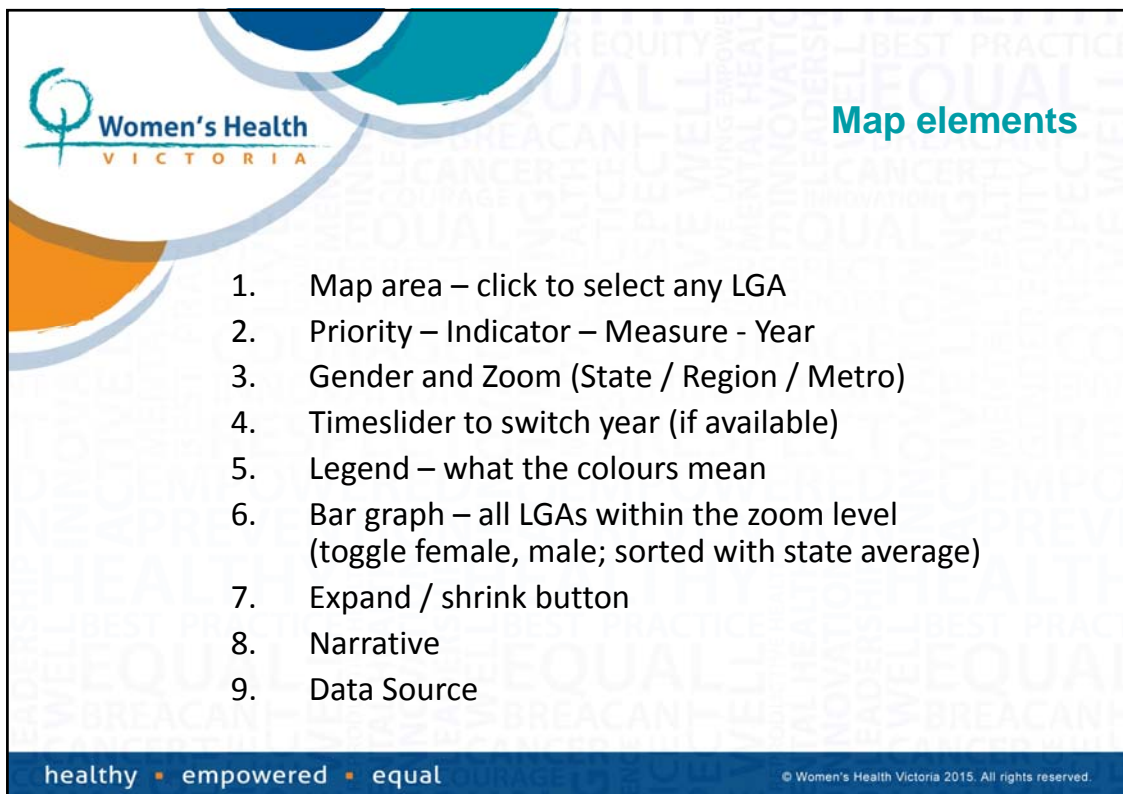
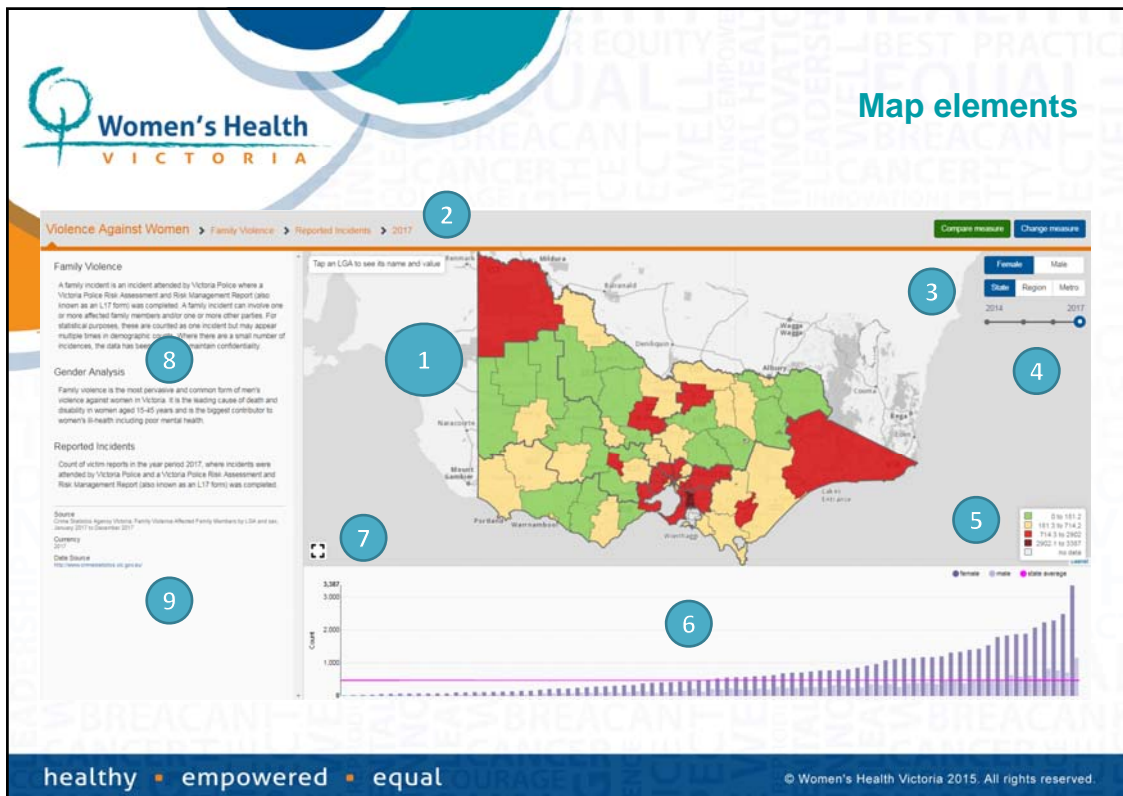
healthy • empowered • equal © Women's Health Victoria 2015. All rights reserved.

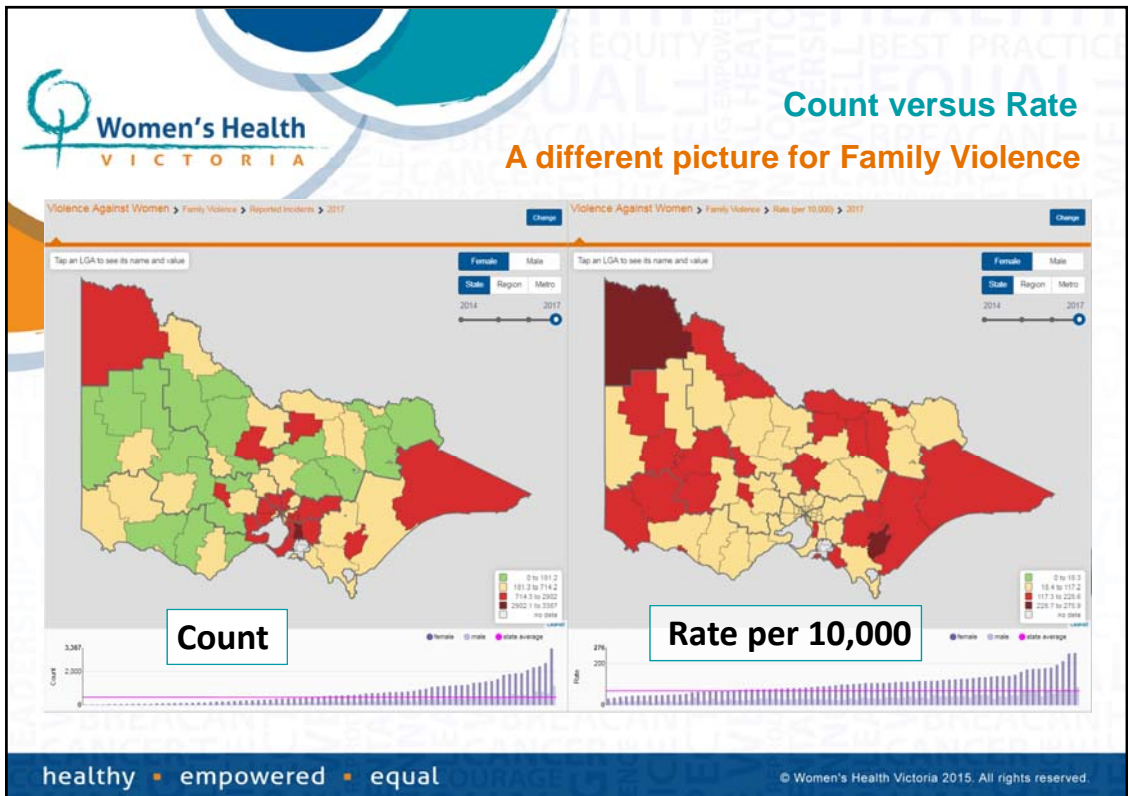
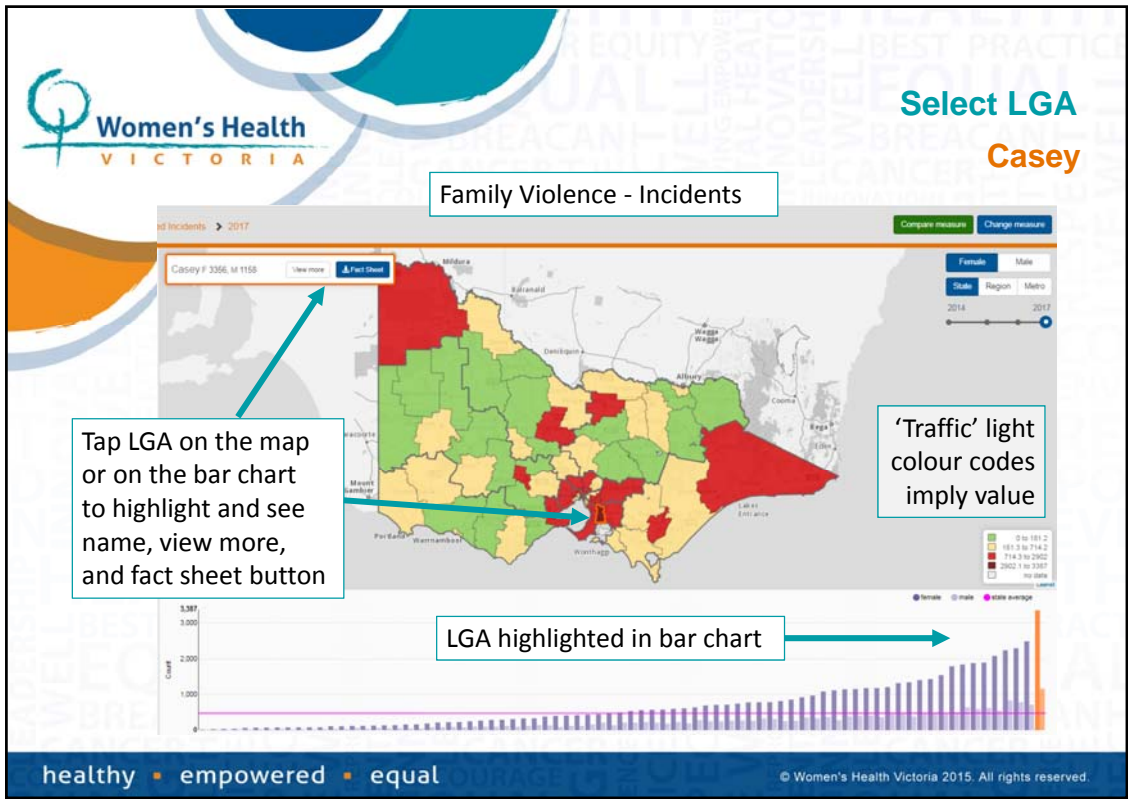


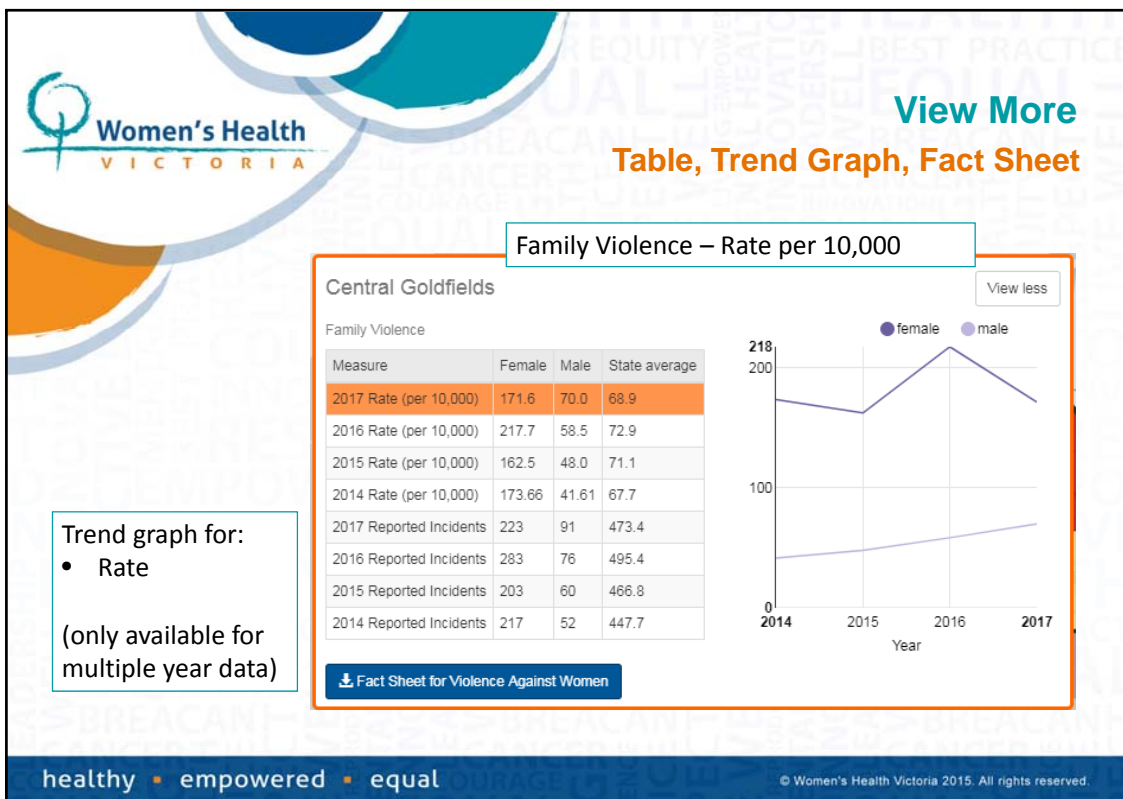
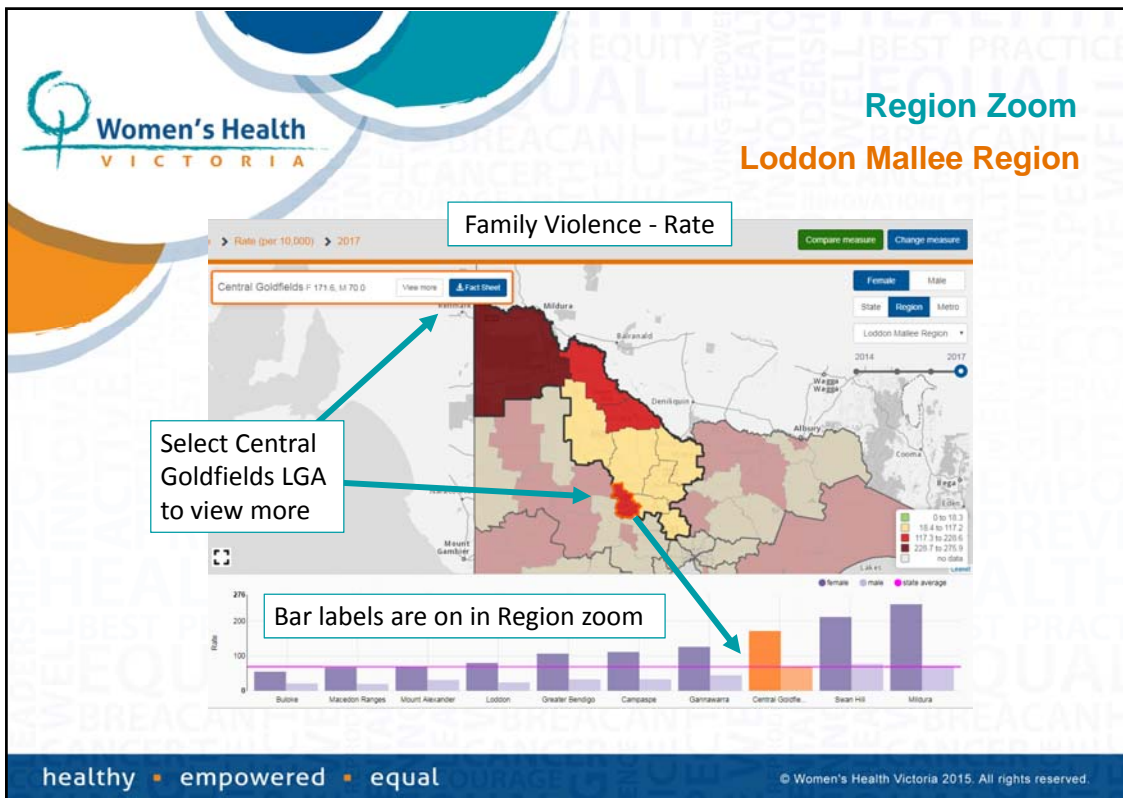
Choose measure
Step 3


- Family Violence
- Rate (per 10,000) >
- Reported Incidents >

healthy • empowered • equal © Women's Health Victoria 2015. All rights reserved.









Fact sheets

Example table layout

Family Violence 2017 Rate (per 10,000)

The rate equals the Count of incidents attended by Victoria Police, in the year period 2017, where a Victoria Police Risk Assessment and Risk Management Report (also known as an L17 form) was completed, per LGA, per 10,000 total persons of the corresponding LGA.

Source: Crime Statistics Agency Victoria, Family Violence Affected Family Members by LGA and sex, January 2017 to December 2017; ABS Census 2016. Currency: 2017

Link: <http://www.crimestatistics.vic.gov.au/>

	Central	Loddon Mallee Region Average	State Average
F	171.6	F 124.5	F 102.5
M	70.0	M 42.5	M 35.2
			All 68.9

Family Violence 2016 Rate (per 10,000)

The rate equals the count of incidents attended by Victoria Police, in the year period 2016, where a Victoria Police Risk Assessment and Risk Management Report (also known as an L17 form) was completed, per LGA, per 10,000 total persons of the corresponding LGA.

Source: Crime Statistics Agency Victoria, Family Violence Affected Family Members by LGA and sex, January 2016 to December 2016; ABS Census 2016. Currency: 2016

Link: <http://www.crimestatistics.vic.gov.au/>

	Central	Loddon Mallee Region Average	State Average
F	217.7	F 142.3	F 109.3
M	58.5	M 44.5	M 36.4
			All 72.9

Table contains:


- LGA data
- Region average
- State average

Plus

- Data description
- Data source

healthy • empowered • equal

© Women's Health Victoria 2015. All rights reserved.



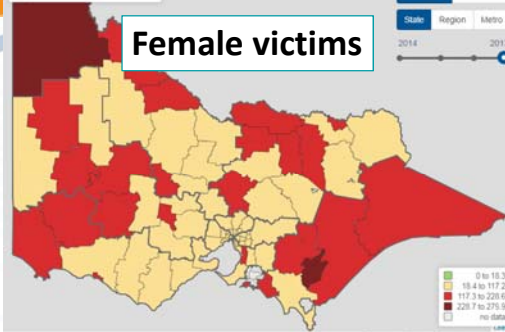
Compare Women and Men

Family Violence Victims - Rate

Violence Against Women > Family Violence > Rate (per 10,000) > 2017

Change

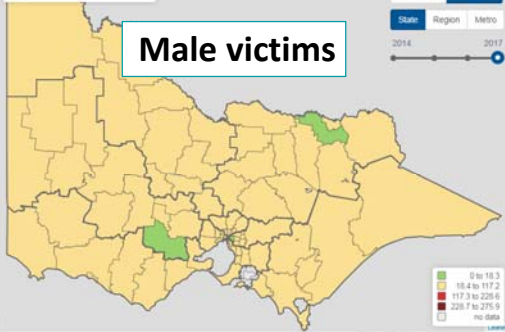
Female victims





Violence Against Women > Family Violence > Rate (per 10,000) > 2017

Change

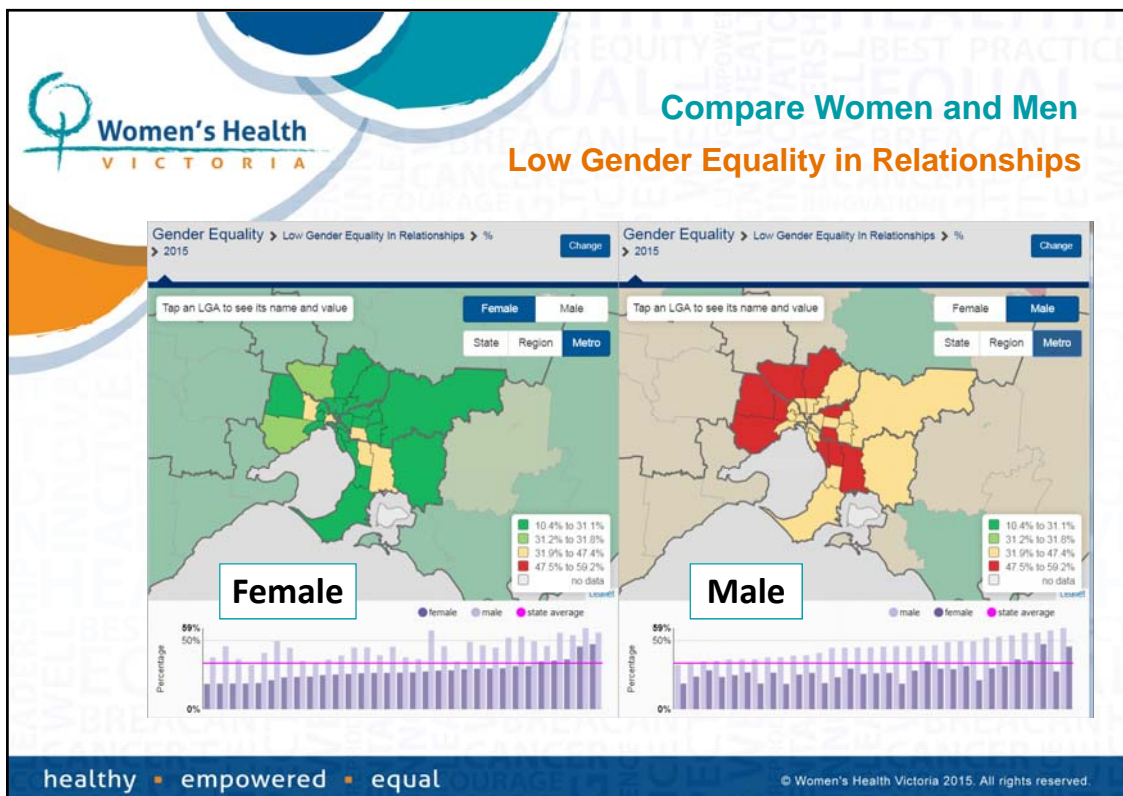
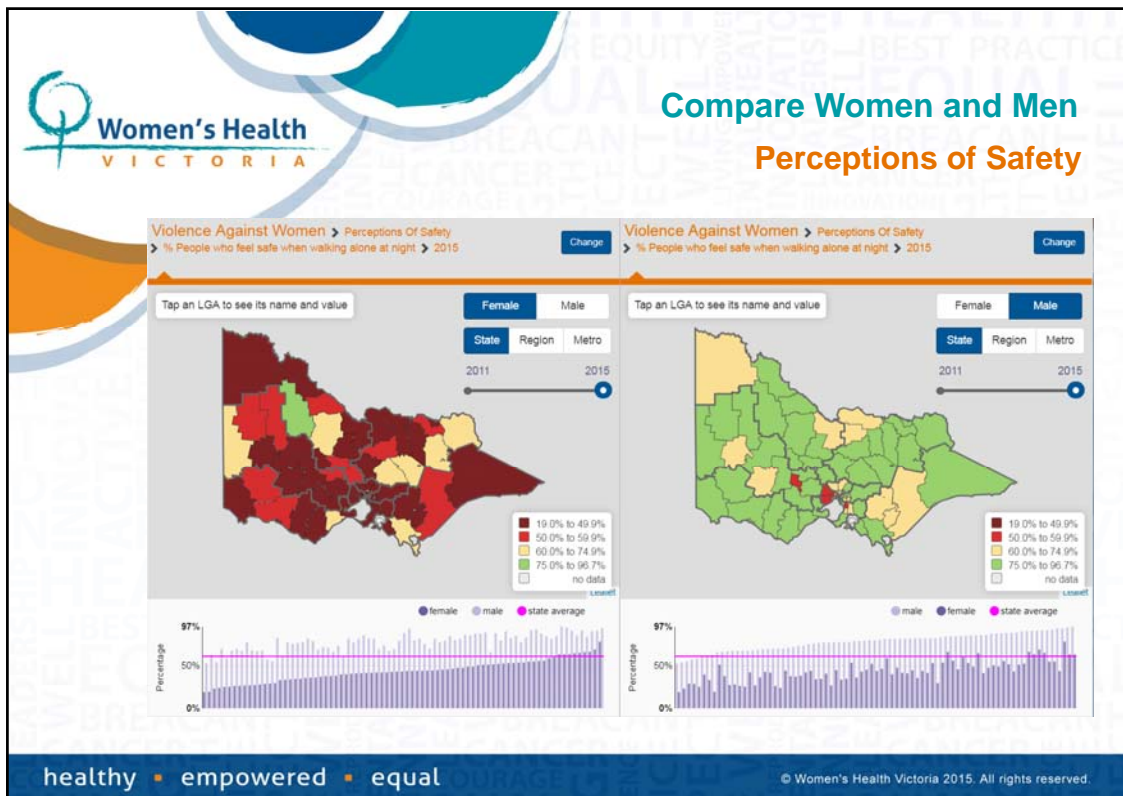
Male victims

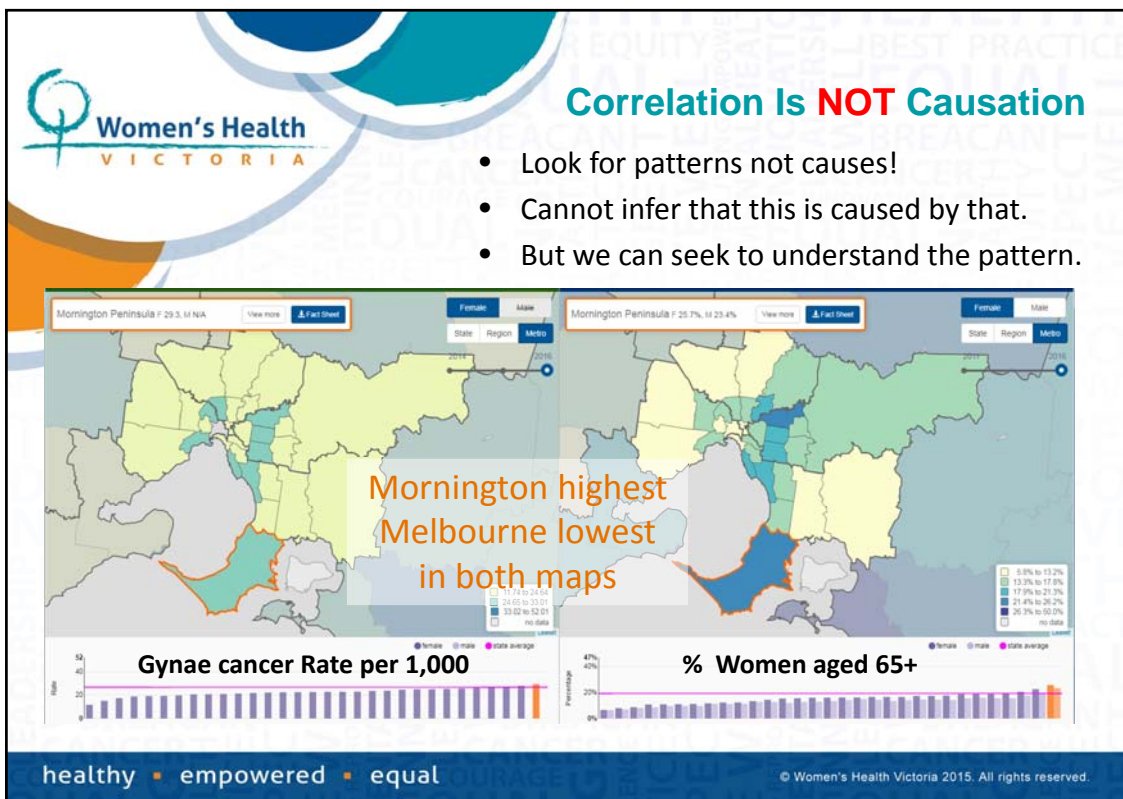
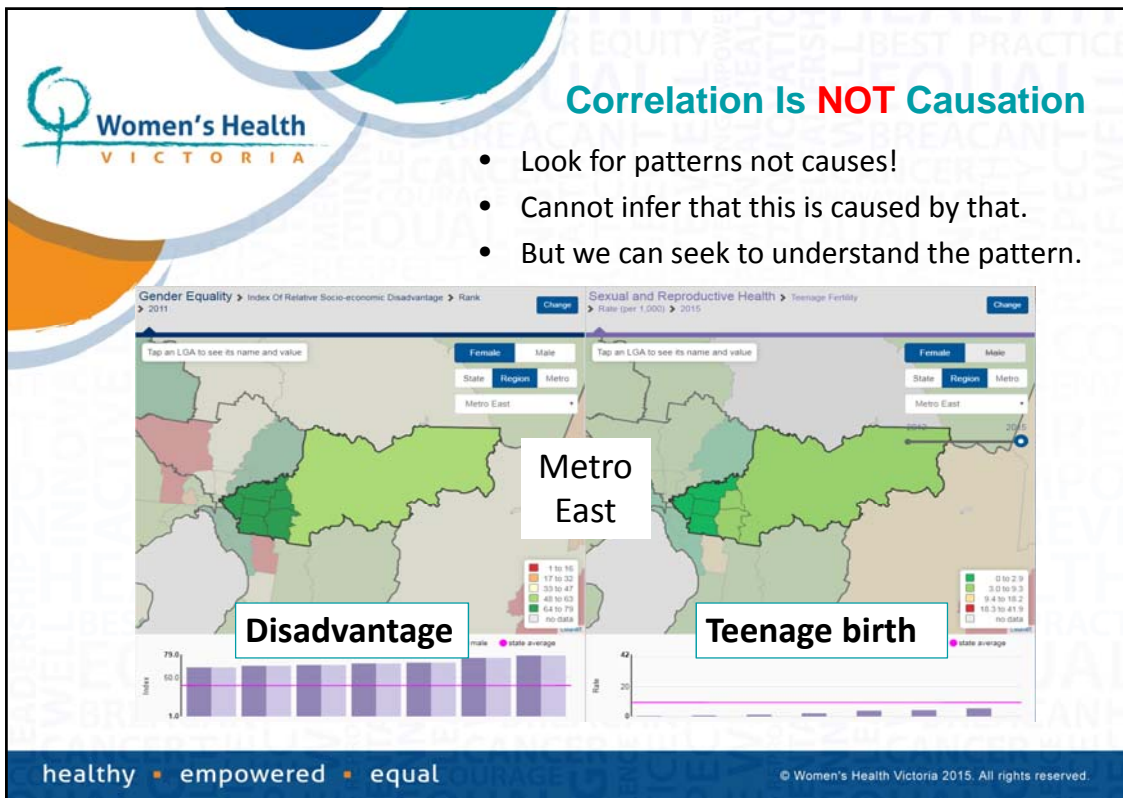






healthy • empowered • equal

© Women's Health Victoria 2015. All rights reserved.







Atlas measures

What's the difference?

Count	Number of persons, number of occasions
Incidence	Number of new health events recorded (RISK) eg: newly diagnosed cases of HIV
Prevalence	Number of cases in total (HOW WIDESPREAD) eg: number of people living with HIV
Percent or Proportion	What piece of the total pie? eg: % of women aged 15 to 24 years
Average	Add all measures, then divide by the number of measures - eg: state average across 79 LGAs
Rate	Convert a count to a comparable measure eg: rate per 10,000 population
Index	Rank each LGA lowest to highest eg: Mothers' Index

healthy ■ empowered ■ equal © Women's Health Victoria 2015. All rights reserved.



National / Statewide Data and Terms of Use

[Home](#) | [About us](#) | [Disclaimer](#) | [Terms of Use](#) | [National / Statewide Data](#)

 **National and Statewide Data**

These datasets are not able to be incorporated into the structure of the Victorian Women's Health Atlas - for example, because they are not broken down by local government areas - but may be of value to users.

Sexual and Reproductive Health

National Survey of Australian Secondary Students and Sexual Health (ARCSHS) 
National Survey assessing student's sexual experiences, behaviours and knowledge.
http://www.redaware.org.au/wp-content/uploads/2014/10/01631-ARCSHS_NSASSSH_FINAL-A-3.pdf

Victorian Cervical Cytology Registry Statistical Report 2014 
Section 2.5 : Closing the data gaps states:
"VCCR is working closely with Program Partners including the DHHS, PapScreen Victoria and VCS Pathology to improve the identification of Aboriginal and Torres Strait Islander women and the ongoing collection and reporting of CALD data to the Registry"
http://www.vccr.org/site/VCCR/filesystem/documents/dataandresearch/StatisticalReports/VCCR_StatisticsReport_2014_Digital_FinalApproved.pdf

Violence Against Women

National Community Attitudes Survey 
In 2013 VicHealth conducted the third national survey of community attitudes towards violence against women. The first survey was undertaken in 1995 and the second in 2009. The NCAS reports and resources on this webpage provide a snapshot of community attitudes to violence at 2013 and over time, and point to the need for ongoing prevention activity.
<https://www.vichealth.vic.gov.au/media-and-resources/publications/2013-national-community-attitudes-towards-violence-against-women-survey>

Suggest a Resource (at the end)

healthy ■ empowered ■ equal © Women's Health Victoria 2015. All rights reserved.