

# MCH Conference – Principal Nurse Update

Marcia Armstrong, Principal Maternal & Child Health Nurse Advisor

23 March 2018



# Background



# DET Early Childhood Reform Plan

## Strengthening the Maternal and Child Health Service (MCH) key actions:

- Expand the Enhanced MCH program
- Family violence: additional MCH visit to women and children at risk, or experiencing
- Workforce development

# Key Actions Update to Strengthen MCH Service

- Enhanced MCH Program Guidelines
- Clinical Supervision Guidelines for Enhanced MCH Program
- Training for MCH workforce: trauma informed practice
- Family violence:
  - Family violence additional visit
  - Professional development for MCH nurses

# Enhanced MCH Program Guidelines

- Enhanced MCH Program Guidelines nearing completion, following extensive consultation
- Guidelines include:
  - New Model of Care (MoC)
  - Strengthened guidance on information sharing, informed consent and privacy
  - Updated guidance to support to identification of, and responses to, family violence
  - New tools such as a standardised referral form and Child and Family Action Plan template
- One day training for Enhanced MCH workforce on the Guidelines planned for June 2018

# Enhanced MCH Program Guidelines

- Release of the Guidelines will tie in with the commencement of the expansion
  - Expansion implemented progressively from 1 July 2018
  - Program reach for age groups receiving service is changing from 10% to 15% of families state-wide
  - Age range increased to include children 1 to 3 years of age
    - Year 1 – 2018/19: one to two year olds in all LGAs
    - Year 2 - 2019/20: one to three year olds in all LGAs staggered

# Clinical Supervision Guidelines for Enhanced MCH

- Clinical Supervision Guidelines published April 2018; thanks for MCH sector contribution
- Local government will be funded for clinical supervision for each Enhanced MCH nurse; roll out in April 2018
- Clinical Supervision Guidelines provide flexibility for local government to cater to their local needs, while maintaining best practice principles such as:
  - monthly, hour long group clinical supervision, or individual as needed
  - flexibility to appoint a trained internal or external clinical supervisor
  - preference for face-to-face, (with the option of phone or web in rural areas)
  - local government can opt to form groups with other local governments or health services, when low workforce numbers or distance are an issue.

# Training: Trauma Informed Practice

## Trauma informed practice training:

- identified as a priority professional development area by nurses
- comprehensive, tailored training package for Universal, Enhanced and MCH Line nurses
- will enhance skills in understanding and supporting families affected by trauma
- scheduled for rollout across Victoria: May-September 2018 (two days: 1 online; 1 in person)
- Local government will receive a funding contribution towards backfill
- will support family violence specific training in 2018 & 2019



## Family Violence Additional Visit

- DET will work with MCH services and MAV to ensure MCH services are supported in implementing the visit and can share best practice
  - Family violence additional consult survey
  - MCH practice note and FAQ has been updated and circulated
  - MCH nurses are currently trained in the Common Risk Assessment Framework (CRAF)
  - MCH training needs analysis to be undertaken in next few months to identify MCH workforce support training, which will be delivered late 2018 / early 2019
- Data on the additional family violence consult will be collected in the Annual Report in July 2018
- Future funding calculations will be informed by data collected in annual reports

# MCH Line

## Now hiring!

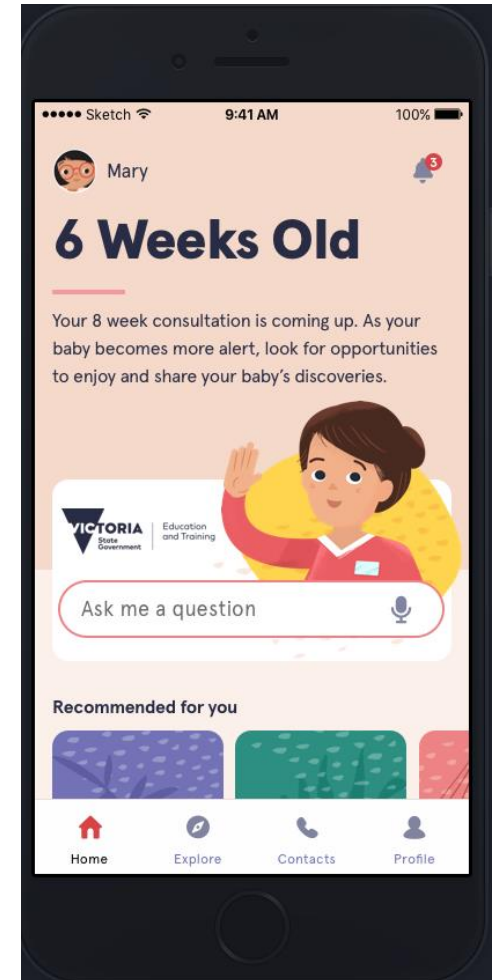
- Recruiting for part time MCH positions
- Working from home arrangements for MCH nurses who live more than 50km from the CBD
- If you are interested please contact Susan Bell – Manager MCH Line on (03) 8392 9137

# MCH App

## New App for families:

Visit the MCH App stand in the foyer for:

- App installation for MCH Conference attendees
- Promotional materials



# Questions and Comments

Melbourne March 2018

©State of Victoria (Department of Education and Training) 2018

The copyright in this document is owned by the State of Victoria (Department of Education and Training), or in the case of some materials, by third parties (third party materials). No part may be reproduced by any process except in accordance with the provisions of the Copyright Act 1968, the National Education Access Licence for Schools (NEALS) (see below) or with permission.

An educational institution situated in Australia which is not conducted for profit, or a body responsible for administering such an institution may copy and communicate the materials, other than third party materials, for the educational purposes of the institution.

Authorised by the Department of Education and Training,

2 Treasury Place, East Melbourne, Victoria, 3002



Education  
and Training