

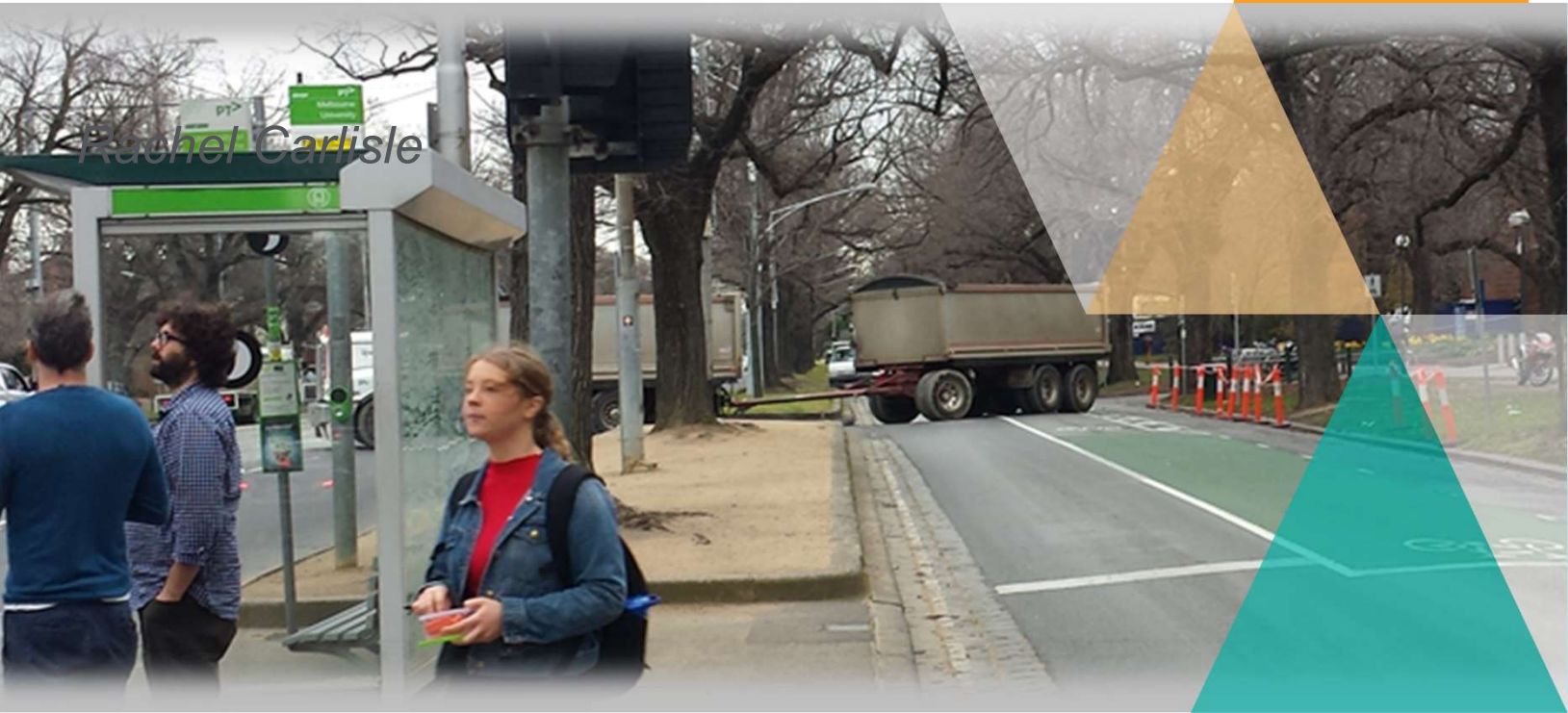
Keeping vulnerable road users safe during construction projects

Construction Truck and Community Safety Project

Rachel Carlisle, Road Safety Victoria, April 2023



Department of Transport and Planning



Rachel Carlisle



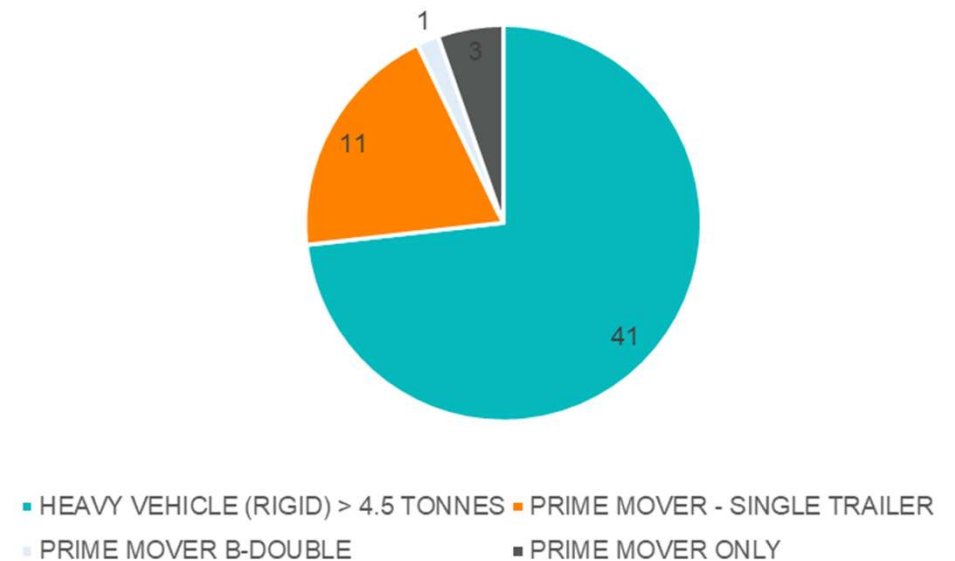
AGENDA

- Overview
- HIRA film
- Transurban truck standards case study
- Questions

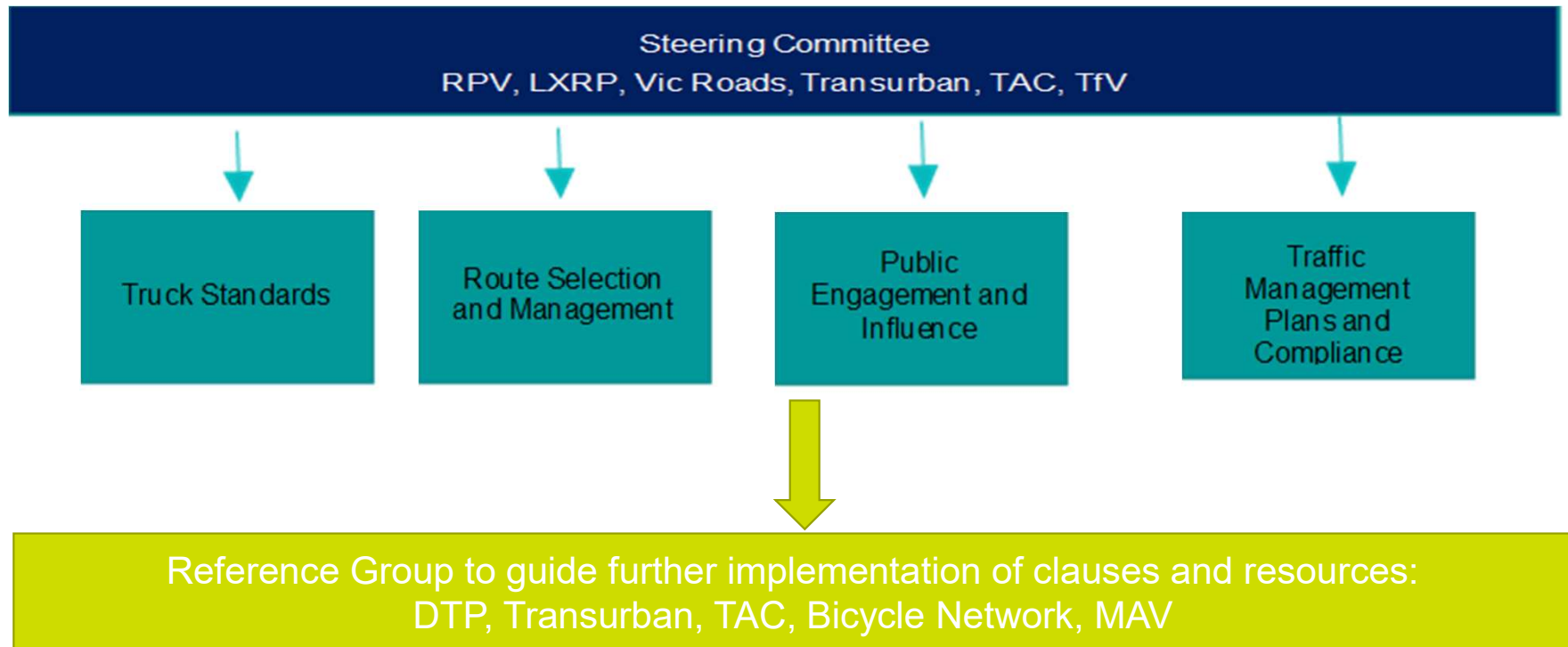
What's the problem?

- Construction trucks represent the oldest trucks in the truck fleet
- They are often owner operated trucks so they are old models with one owner who subcontracts to larger haulage contractors.
- Truck/Vulnerable Road User interactions create catastrophic events in which VRU are hyper vulnerable.
- Construction trucks are involved in 67% of truck/pedestrian crashes and 74% of truck/bicycle rider crashes.
- Geographic location – construction sites are often co-located where active transport usage is high.

Truck and Bicycle Crashes by Truck Body Type
2014 - 2019

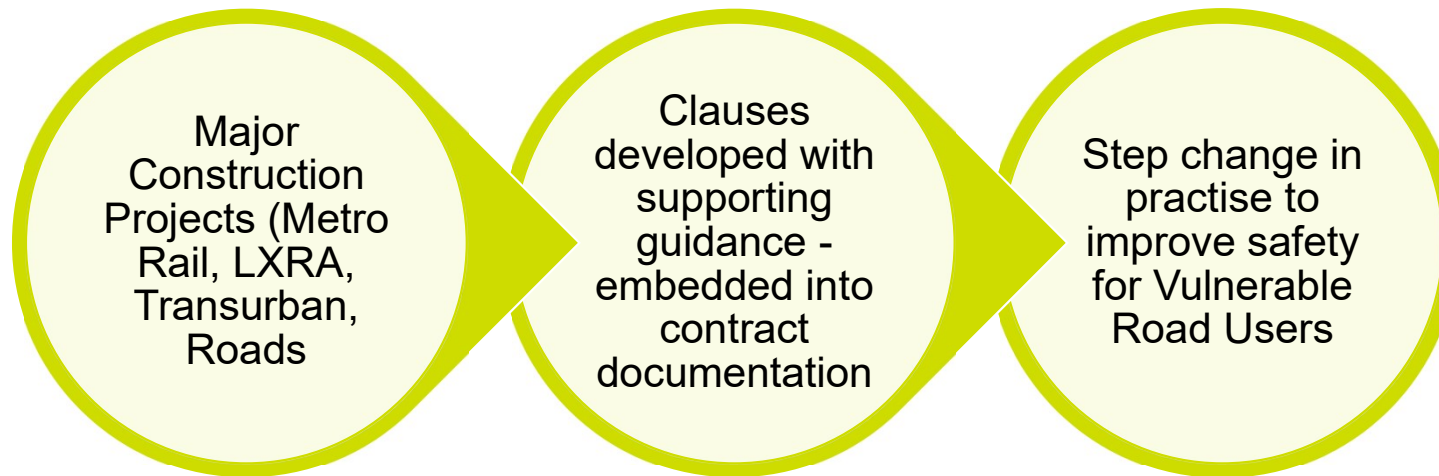


Background



- Multi-stakeholder input into forums and working groups
- Related to Construction Logistics and Community Safety (CLOCS), a Transport for London project, and helped to inspire the CLOCS-A national Australian project.

Clause induced safety improvements



Truck Standards

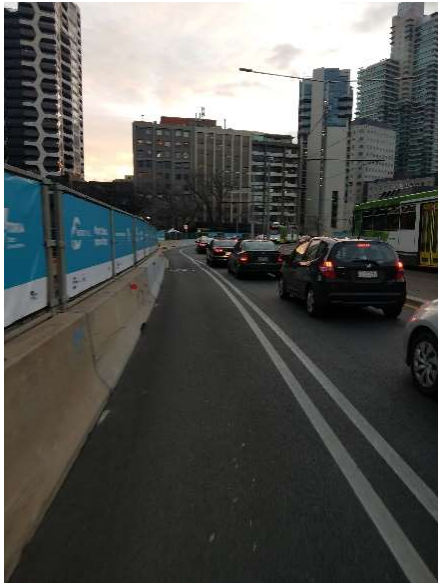
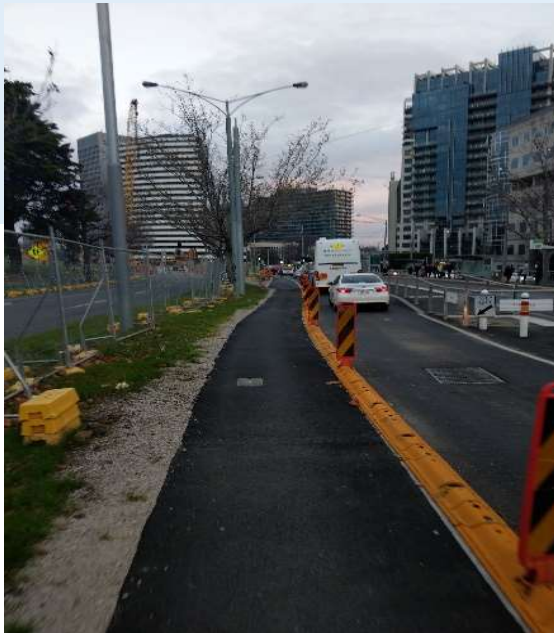
- Current clauses embedded in: Metro Rail, NELA, Transurban projects and others
- Additional Victorian project undertaken to determine three tier truck standards for CLOCS-A project



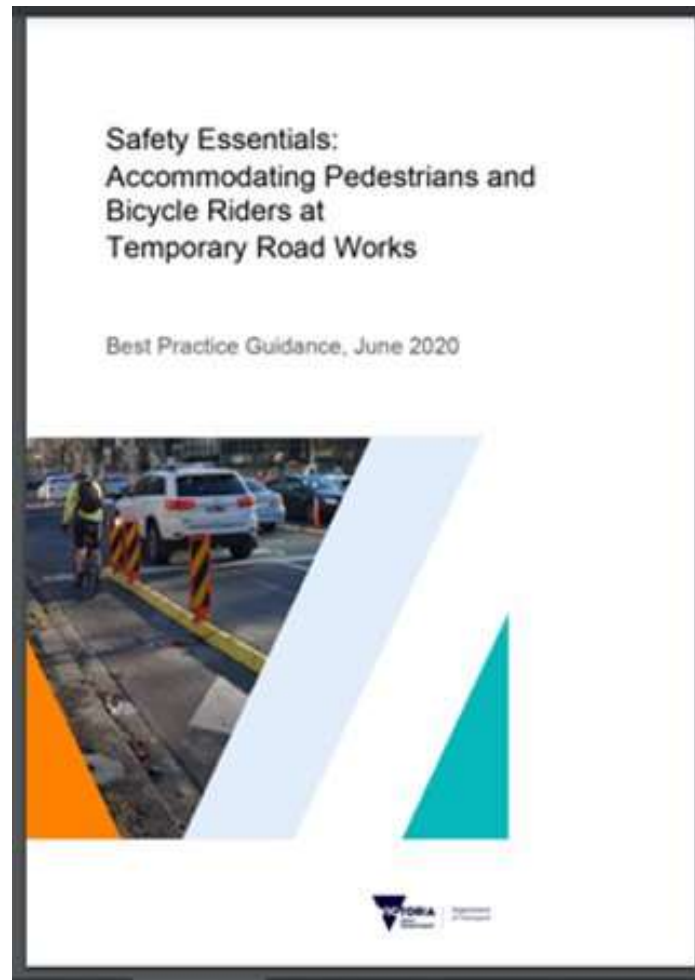
Temporary Traffic Management



Supportive measures



Temporary Traffic Management Resources



Positioning of signs

Signs for drivers must not block the way for pedestrians and bicycle riders



FIGURE 19: TEMPORARY SIGNAGE OBSTRUCTING CYCLE LANE FORCING BIKES INTO VEHICLE LANE



FIGURE 20: TEMPORARY SIGN LEAVING INADEQUATE WIDTH ON SHARED PATH FOR PEDESTRIANS AND CYCLISTS



FIGURE 8: OBSTRUCTED ROUTE AND UNEVEN SURFACE - DIVERSION PATHS SHOULD BE SMOOTH AND CLEAR OF OBSTRUCTIONS



FIGURE 9: NO CLEAR ROUTE EXCEPT IN ROAD - ENSURE CLEAR, LEGIBLE ROUTES FOR PEDESTRIANS IF THE FOOTPATH IS CLOSED



FIGURE 22: TEMPORARY SIGNAGE CORRECTLY PLACED SO NOT OBSTRUCTING CYCLE LANE



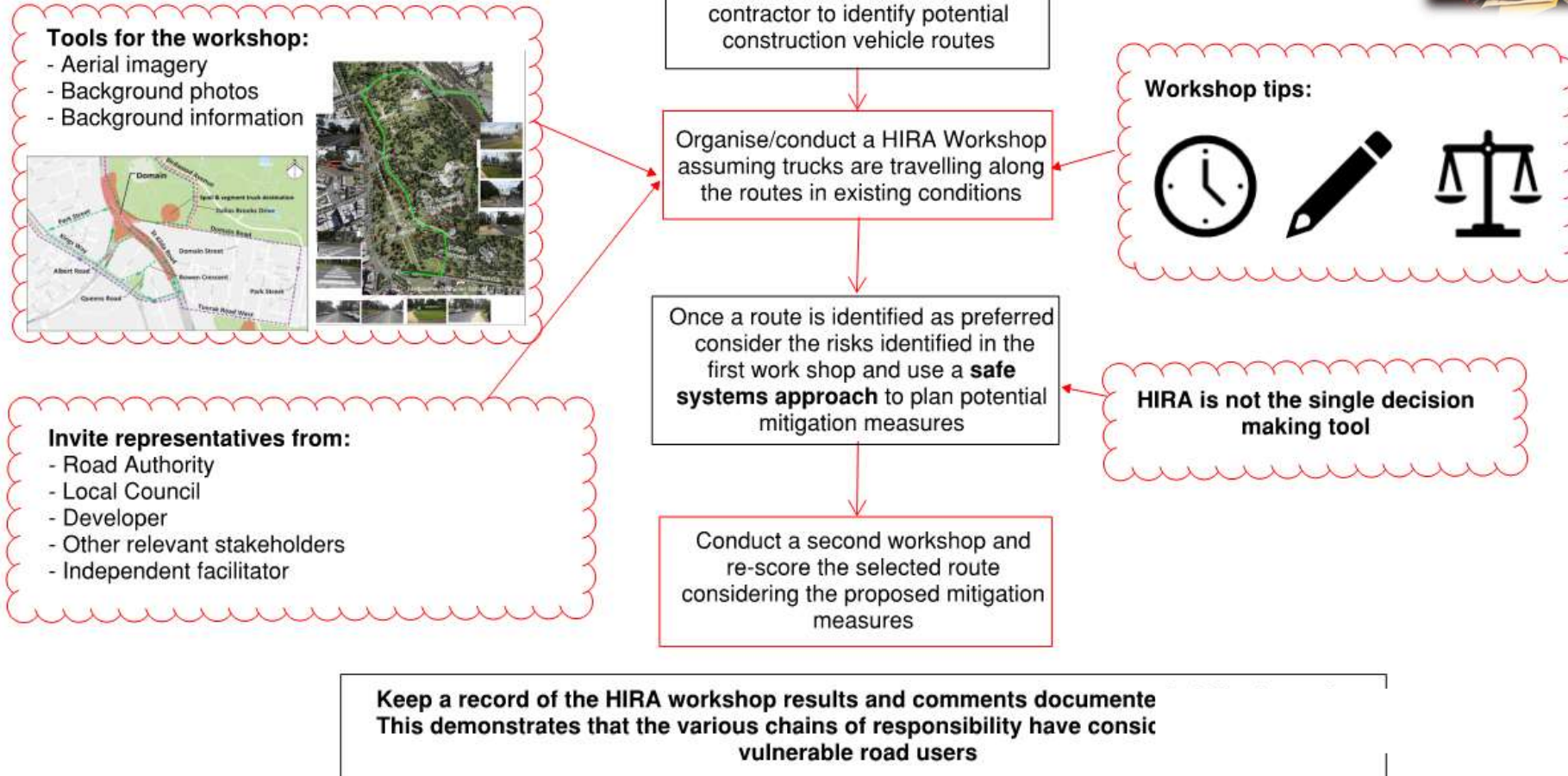
FIGURE 23: PROVIDE TEMPORARY RAMPS FOR MOBILITY IMPAIRED AND WHEELCHAIR USERS

Route Selection Tool



A Decision Support Tool for Major Construction Project Traffic Planning

Process



Communications and engagement

- Metro Rail Swapping Seats and ABC public communications



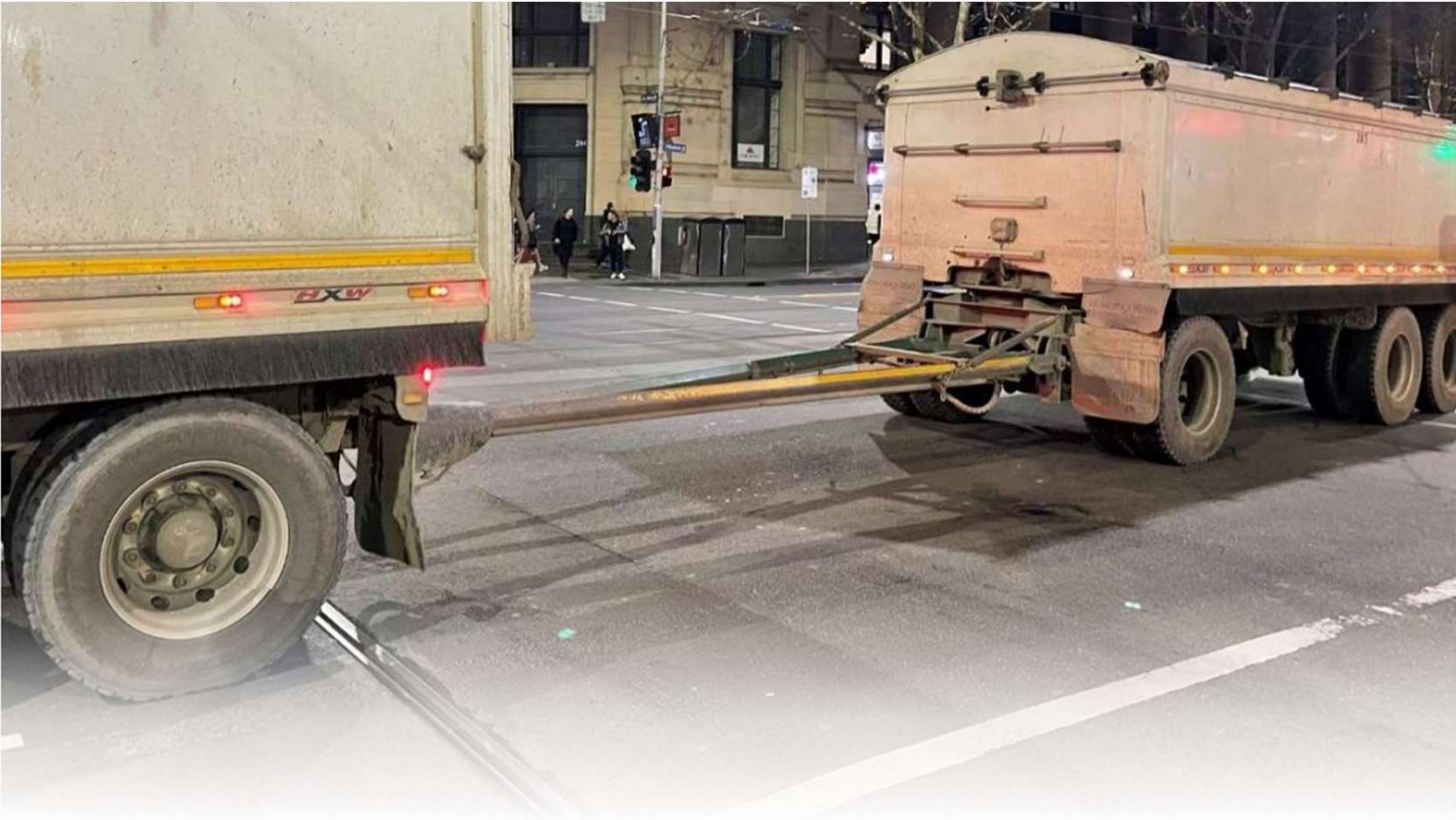
- Social media public communications
- Web page resource collection



Current work



Research - Improving Drawbar Safety

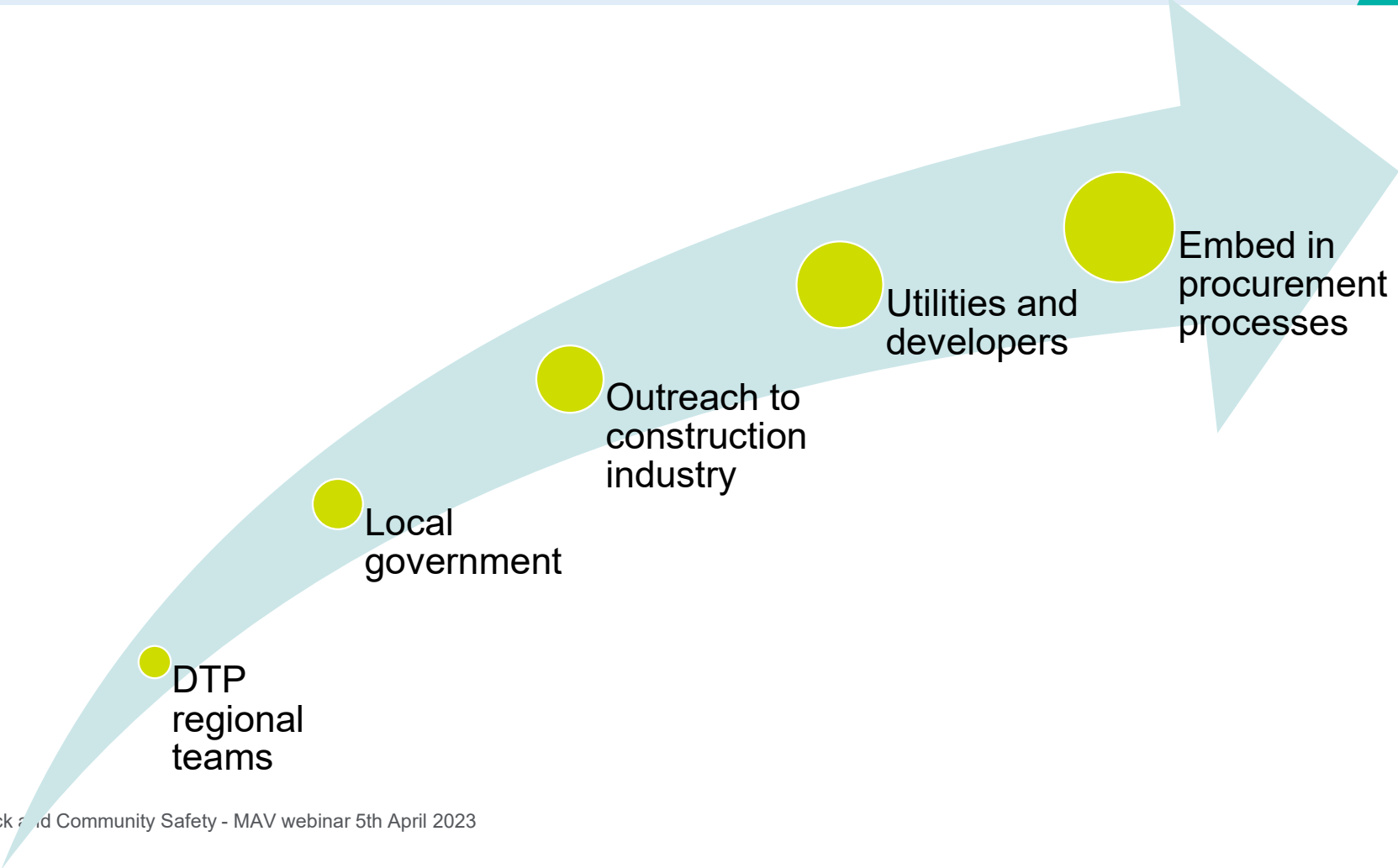


Communications

- **Public Education outreach**
- **Industry outreach**
 - HIRA tool instructional video
 - Truck driver toolbox talks (with NRSPP):
 - Blind spots
 - Pedestrians
 - Bicycle riders
 - Case study development (with CLOCS-A)



Future engagement



Questions?

Contact details:

Victoria

Construction truck and community safety

<https://www.vicroads.vic.gov.au/safety-and-road-rules/road-safety-programs/construction-trucks-and-community-safety>

Rachel Carlisle

rachel.carlisle@roads.vic.gov.au

National

CLOCS-A

<https://clocs-a.org.au/>

National Road Safety Partnership Program

<https://www.nrspp.org.au/resources/toolboxtalks/>





Thank you